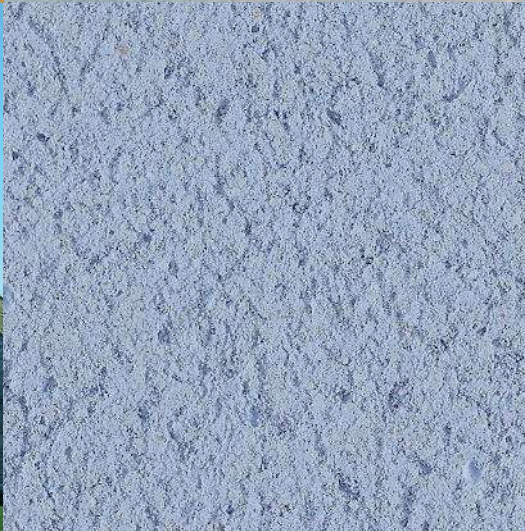
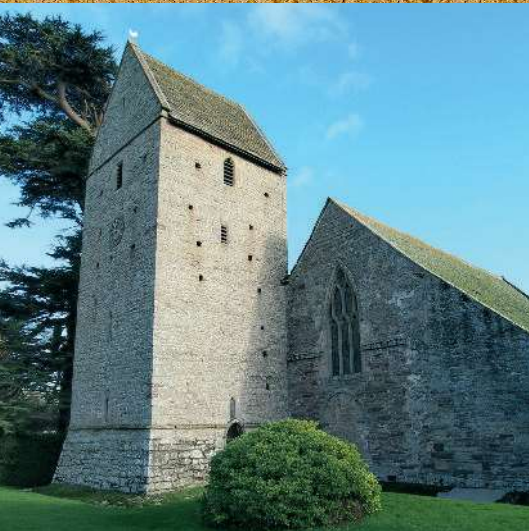


Colours for Renders and Mortars

lime|green



St Martin-in-the Fields

Repaired using Natural Lime Mortar inside and out, together with Prompt Lime Mortar and Pure Lime Grout



King's Cross Station

Re-built using colour-matched Natural Lime Mortar for the brickwork, and Roman Stucco for cornices and mouldings.



Houlston Manor

A traditional brick farmhouse upgraded with our BBA approved Warmshell breathable insulation system.



Render & Mortar Textures

These textures are created by varying the size of the aggregate we use when we mix renders and mortars. They are available in each different colour.

Your builder or plasterer can also alter the texture by using different tools and techniques, such as

sponging, scraping or casting and so on. For more information on textures and finishing styles please ask us or visit our website.



SG Chalk



RG Chalk



CG Chalk

Colours

The external finish is one of the first things you notice about a property, so our colours are chosen to give a beautiful natural appearance which won't fade. The style of finish used (floated, sponged scraped etc.) and the weather conditions (humidity, lighting conditions) can give a different look to that shown here. We recommend the applicator creates a sample panel on site before work commences.

Due to the limitations of the printing process used to produce this brochure the colours shown may vary from those of the product used.



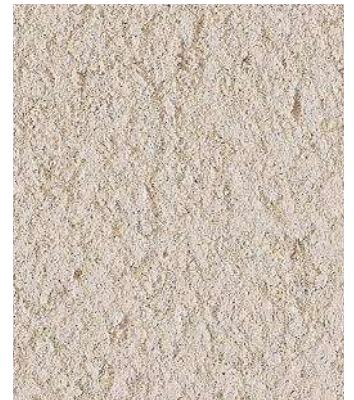
Chalk



White*



Tallow



Grinshill



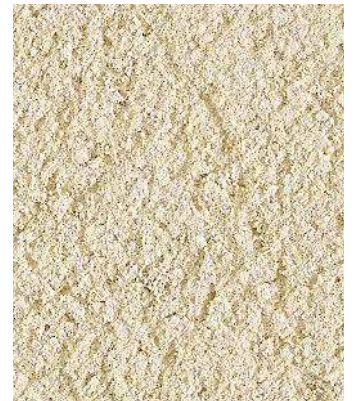
Purbeck



Honeysuckle



Barley



Bath



Cotswold



Stone



Earth



Salmon



Woad



Birch



Pomona



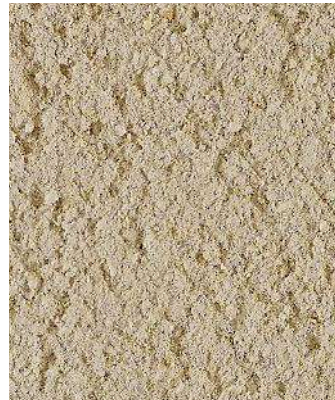
York



Ochre



Ironstone



Corfton



Seaside Blue



Bracken



Harnage



Tugford



Terracotta



Penrhyn



Farringdon



Autumn



Cinders

Our Range of Renders, Plasters, Mortars & Paints

Through ongoing research in our 'Lime Lab', we're continually refining and developing products that make use of the unique qualities of lime to deliver high performance and a beautiful finish, even under challenging conditions.

With a wide choice of options, from our breathable Warmshell® insulation system to our mortars for conservation, we offer training, local knowledge and support at all stages of your project.



Coloured Lime Renders

Natural Finish



A pure lime finish coat render incorporating marble aggregates to give a durable and attractive appearance without compromising breathability. Available in a range of colours and textures.

Tradirend



A finish coat render incorporating both lime and some white cement. Particularly appropriate as a decorative coating over Forte undercoat render. Available in a range of colours and textures.

Finish WP



A specialist lime finish coat render for the Warmshell insulation system. It has exceptional water resistance while remaining highly breathable. Available in a range of colours and textures.



Silicate Render



A waterglass render with the breathability and flexibility of lime but a crisp, modern appearance. Available in a wide range of colours.



Paints

Motif



An exterior lime paint made from hydraulic lime and crushed marble, for a soft, breathable finish on render, brick or stone.



Silicate Paint



A highly breathable and long lasting mineral paint. It is not film forming so will never peel or blister. Suitable for over-painting existing lime render finishes



Lime Mortars

Natural Lime Mortar



A premixed general purpose lime mortar for building and pointing stone, brick and block. Available in a range of strengths, colours and textures.

Ashlar Lime Mortar



A fine grained lime mortar for building and pointing tight joints in brick or stone. Available in a range of colours.

Prompt Lime Mortar



A specialist mortar which combines the benefits of lime with the rapid set of Roman Cement. Suitable for work in demanding situations.

Lime Render & Plaster

Solo



A one-coat lime plaster for interior use on masonry and boards. Can be finished to a smooth surface suitable for decoration.

Ultra



An insulating lime undercoat render for indoor or outdoor use. Suitable for most masonry and lath backgrounds.

Duro



A general purpose lime undercoat render. Suitable for most masonry backgrounds.

Forte



A general purpose undercoat render incorporating some white cement. Suitable for modern masonry including dense concrete blocks and brickwork.

Prebond WP



A specialist lime undercoat render for Warmshell woodfibre insulation boards and other lightweight insulation backgrounds.



Roman Stucco



A decorative, fast setting Roman Cement render. Can be used in the repair and replacement of decorative mouldings and cast elements as well as plain rendering.

Other Products

Natural Stipple



A pure lime preparation coat with excellent adhesion to difficult historic structures. Suitable for both high and low suction masonry backgrounds.

Grippa



A fast setting preparation coat modified to give excellent adhesion to difficult backgrounds.

Pure Lime Grout



A void filling product for strengthening and consolidating historic structures without compromising breathability.

Lime Green Products Ltd, Coates Kilns,
Stretton Road, Much Wenlock, TF13 6DG
Telephone: 01952 728611

www.lime-green.co.uk

Newport St. Gallery Staircase Photo Prudence Cuming Associates © Victor Mara

Lime Green and Warmshell are registered trademarks of Lime Green Products Ltd

V3:06:16